

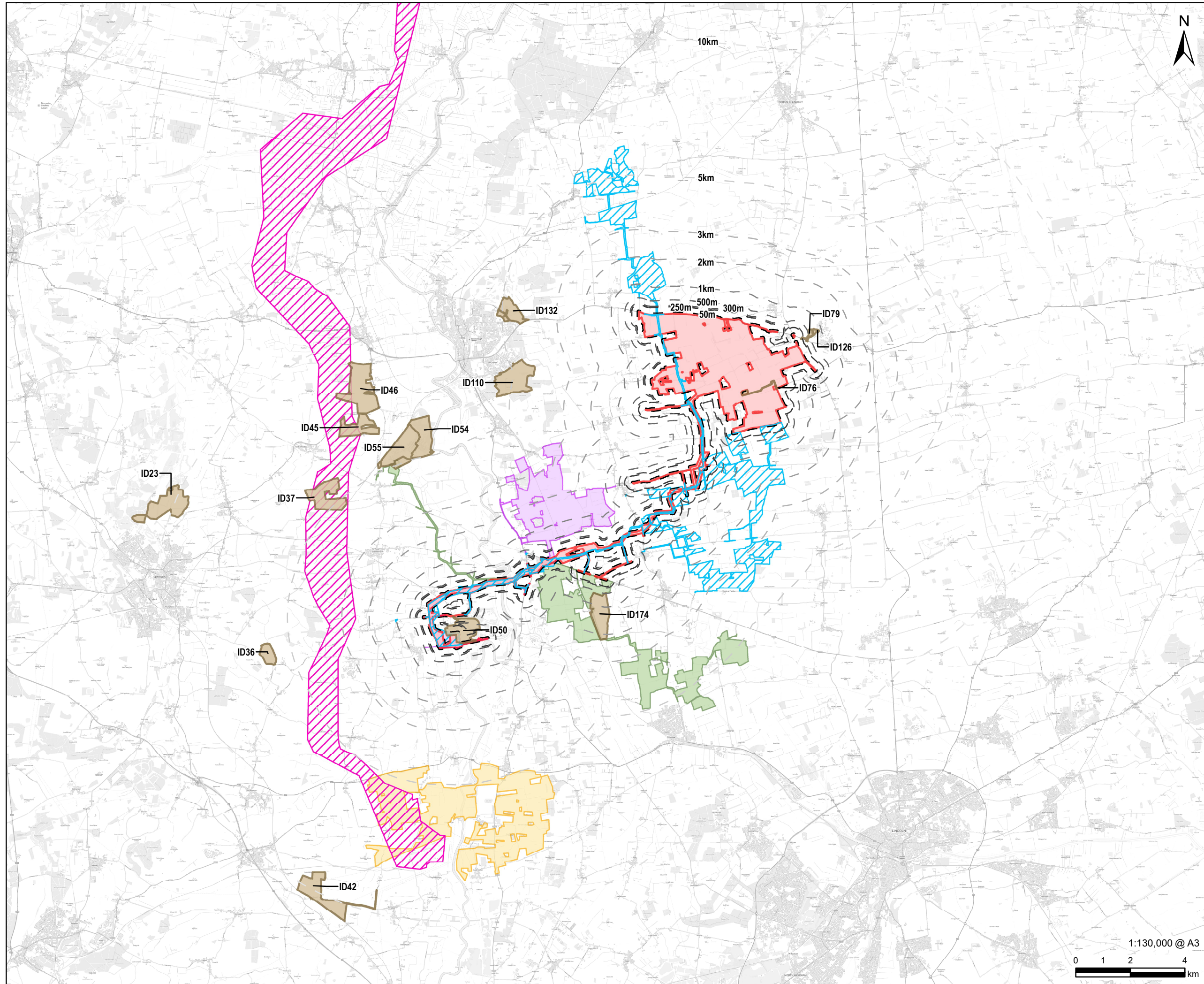
**Tillbridge Solar Project
EN010142**

**Volume 6
Environmental Statement
Figure 18-1: Cumulative Developments
Document Reference: EN010142/APP/6.3**

**Regulation 5(2)(a)
Infrastructure Planning (Applications: Prescribed Forms and
Procedure) Regulations 2009**

**April 2024
Revision Number: 00**

tillbridgesolar.com



PROJECT
 Tillbridge Solar Project

CLIENT
 Tillbridge Solar Ltd

CONSULTANT
 Aldgate Tower
 2, Leman Street
 London, E1 8FA
 United Kingdom
 T +44-0207-645-2000

- LEGEND**
- Order limits
 - Cumulative Scheme
 - Cottam Solar Project Boundary
 - Gate Burton Energy Park
 - Indicative One Earth Solar Boundary
 - North Humber to Marnham
 - West Burton Solar Project

- Buffers**
- 50m
 - 250m
 - 300m
 - 500m
 - 1km
 - 2km
 - 3km
 - 5km
 - 10km

NOTES

Contains Ordnance Survey Data © Crown Copyright and database right 2023.
 © Crown copyright and database rights 2023.
 Ordnance Survey 0100031673.

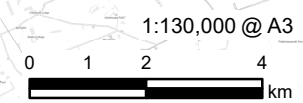
Tillbridge Solar Indicative Cumulative Scheme boundaries provided by Lincolnshire County Council (2024), Bassetlaw District Council (2024), Nottinghamshire County Council (2024) and West Lindsey District Council (2024)

ISSUE PURPOSE
 DCO Submission

PROJECT NUMBER
 60677969

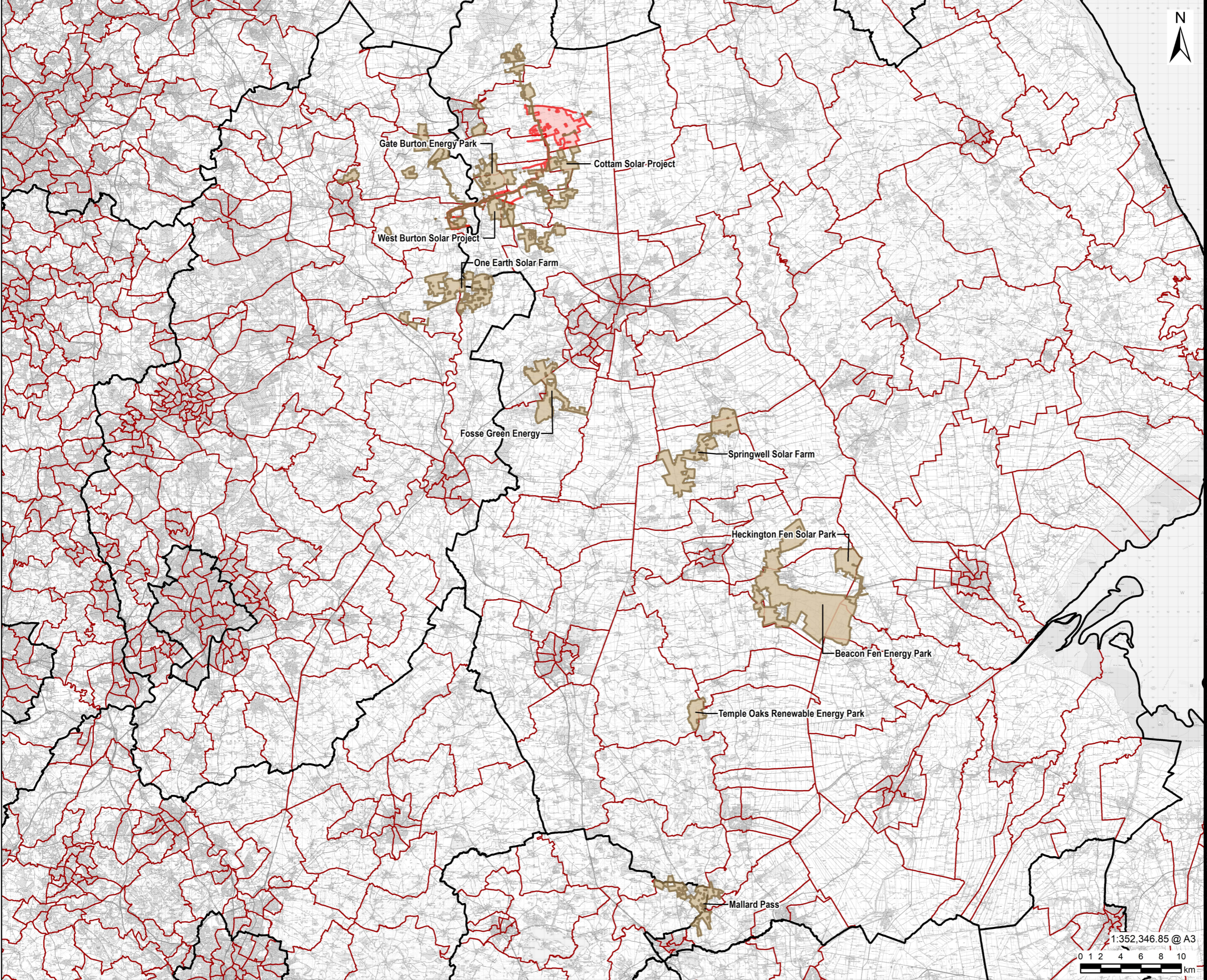
FIGURE TITLE
 Cumulative Developments

FIGURE NUMBER
 Figure 18-1a



This drawing has been prepared by the use of AECOM's client. It may not be used, modified, reproduced or relied upon by third parties, except as agreed by AECOM or as required by law. AECOM accepts no responsibility, and denies any liability whatsoever, to any party that uses or relies on this drawing without AECOM's express written consent. Do not scale this document. All measurements must be obtained from the stated dimensions.

Revision: 0 Drawn: HW Checked: LL Approved: CW Date: 2024-03-25
Filename: \\na.aecomnet.com\is\EMEA\London-UK\London-UK\Legacy\UK\London\06\PP\001-1\VDPE\Library\GIS_DATA\Projects\Tillbridge Solar\ES_Figure18-1b_CumulativeDevelopments.mxd



AECOM

PROJECT
Tillbridge Solar Project

CLIENT
Tillbridge Solar Ltd

CONSULTANT
Aldgate Tower
2, Leman Street
London, E1 8FA
United Kingdom
T +44-0207-645-2000

- LEGEND**
- Order limits
 - Cumulative Scheme
 - County Boundary
 - District Boundary

NOTES

Contains Ordnance Survey Data © Crown Copyright and database right 2023.
© Crown copyright and database rights 2023. Ordnance Survey 0100031673.

Tillbridge Solar Indicative Cumulative Scheme boundaries provided by Lincolnshire County Council (2024), Bassetlaw District Council (2024), Nottinghamshire County Council (2024) and West Lindsey District Council (2024)

Refer to Figure 18-1a for details of the cumulative schemes within 10km of the Order limits.

ISSUE PURPOSE

DCO Submission
PROJECT NUMBER
60677969

FIGURE TITLE
Cumulative Developments

FIGURE NUMBER
Figure 18-1b

1:352,346.85 @ A3
0 1 2 4 6 8 10
km

This drawing has been prepared for the use of AECOM's client. It may not be used, modified, reproduced or relied upon by third parties, except as agreed by AECOM or as required by law. AECOM accepts no responsibility, and denies any liability whatsoever, to any party that uses or relies on this drawing without AECOM's express written consent. Do not scale this document. All measurements must be obtained from the stated dimensions.